

POSTSCRIPTS

News of the CSU East Bay Hayward Emeritus and Retired Faculty Association
Fall 2010

Board of Directors

Cal Caplan, Acad. Senator (925) 846-9775
calvin.caplan@csueastbay.edu

Carol Castagnozzi (510) 581-6034
carol.castagnozzi@csueastbay.edu

Jack Kilgour (510) 582-8760
injkilgour@att.net

Sherman Lewis, editor (510) 538-3692
sherman@csuhayward.us

Ned Lyke (510) 537-5961
eblyke@comcast.net

Bea Pressley, President (925) 946-9786
beapressley@mac.com

Bill Reuter (510) 653-8881
wreuter493@aol.com

Alan Smith (510) 836-3144
amsmith38@aol.com

Helen Sowers, Treasurer (510) 537-2377
hmsowers@comcast.net

Judy Stanley (510) 655-5892
judithstan@aol.com

Bill Vandenburg (510) 537-0594
vandy17@earthlink.net

President's Message:

Greetings!

Our Fall luncheon is scheduled a little later this year because Dino's was booked for our earlier choices. However, since we will have the election results, there will be a great opportunity for discussion (or disgust, depending upon one's choices.)

Our luncheon speaker will be **Professor Robert Phelps** of the History Department and his topic will focus on **the state of California**. Those who have heard him speak praise his presentations. Judy Stanley, Statewide ERFA secretary will report on the discussions at the October conference at Dominguez Hills.

As we move further from our days of direct contact with the campus, there is less gossip to share. Perhaps our goal should include remedying this.

While we have no dues and lose money on the luncheon we were still able to donate \$1000 to the Library Endowment. Maybe we should nominate treasurer Helen Sowers for a Statewide financial position. Sacramento could use a highly qualified person.

--Bea Pressley, President

Editor's note: From the Treasurer's report: Account 9/28/10 balance: \$2,807.35, down \$291.35 from 2/2/10. We have 144 members and get about \$1,492 per year from ERFA. Lunch costs about \$1,000 and we collect about \$900 in lunch money.

Fall Luncheon

Guest Speaker: **Robert Phelps** of the History Department on the state of California.

Date: **Tuesday, November 16, 2010**

Time: Gather starting at **11:30, social hour of 45 minutes, sit down 12:15**

Place: Dino's at 3600 Castro Valley Blvd., Castro Valley

All lunches are still \$20, in cash or by check, paid when you arrive at Dino's. Checks are **payable to Helen Sowers**, our treasurer. Lunches include food, gratuity, tax, coffee, tea, tossed green salad with Italian dressing, vegetables, rolls, iced tea, red wine and white wine.

Menu	1. Vegetarian Lasagna
	2. Broiled Salmon with dill cream sauce and rice
	3. Bay Shrimp Louie with Louie dressing
	4. Veal Scallopini with pasta

PLEASE MAKE RESERVATIONS AND MENU SELECTIONS **by Thursday November 11 with**

- **Jack Kilgour:** 510-582-8760, ijnkilgour@att.net or john.kilgour@csueastbay.edu or
- **Bea Pressley:** (925) 946-9786, beapressley@mac.com

Your timely RSVP is appreciated; Jack has to get a head count to the restaurant so they know how many meals to prepare.



Emeriti Academic Senator's Message

The first meeting of the CSUEB Academic Senate was held Tuesday 5 October. Besides the introduction of new officers and the usual announcements there was no earth-shattering business on the agenda. The president did comment that the budget (which was passed) would be favorable to the University. He indicated that we lost between 30 and 42 Tenure Track faculty and 140 lecturers and numerous staff. He indicated that the provost is currently working with the College Deans to determine the criteria for hiring approximately 30 new TT faculty during the 2011- 12 year.

We currently have 319 TT faculty on campus. He indicated that we will be able to reopen admission to Winter and Spring quarter student applicants. Finally he said that there have been additional funds approved through the budgetary process that will enable the University to increase class offerings Winter and Spring Quarter 2011.

-Cal Caplan



Editor's note: Get on Cal's list for an unending supply of jokes by email.

Obituaries

Editor's note: Has the University stopped publishing obituaries? If I have omitted anyone, let me know. On 3/16/2010 I emailed President Qayoumi requesting resumption of coverage. The email was never answered. Nevertheless, *Communiques* were issued for Robert Whitney and John Morby.

Robert "Bob" Whitney died peacefully at home in Alameda August 12, 2010 at ninety-one years. Bob grew up in Seattle and Bellevue, Washington, graduated from Roosevelt High School in Seattle, and entered the University Of Washington in 1938 as an engineering student. He was a four-year member of the varsity crew. World War II interrupted his studies at the University of Washington. Bob joined the Navy and became a fighter pilot and squadron leader. During the Pacific campaign, he flew Corsairs from the aircraft carrier Shangri La. He retired from the Navy as a Captain in the Naval Reserve.

Bob received a B.S. degree from the University of Washington in 1947. He started graduate study in 1955 and earned the M.S. degree in 1958 and the Ph.D. in 1963, both from Cornell University. The newly minted Prof. Whitney began his career at California State College, Hayward in fall 1963 where he was a physics professor for nearly thirty years. Bob was a teacher at heart and enjoyed mentoring his students. He retired in 1983 and participated in the Faculty Early Retirement Program until 1990.

He had a life-long love of sailing. He was an active member of the Aeolian Yacht Club in Alameda, enjoyed sailing on the Bay, and twice participated in Single-handed Trans-Pac races to Hawaii. Fit and energetic, Bob also rowed his shell in the Estuary until he was ninety.

Bob was married to Jeanne McKinnell Whitney for sixty-three years. Jeanne died in 2008, and Bob deeply missed her during his last two years. Bob and Jeanne had two sons, Robert Jr. (wife Sharon) of Tucson and John (wife Liz) of Oakland. He has a granddaughter, five grandsons, and four great grandchildren. Bob and Jeanne enjoyed many years of active membership in the Congregational Church of Alameda where they sang in the choir. They appreciated the progressive and inclusive attitudes that exist among the membership.

John Morby died of natural causes at his home in Hayward on September 3, 2010 at 71 years. John was born and raised in Berkeley. He graduated from Berkeley High School in 1957, received an A.B. in history from the University of California, Berkeley in 1960, an M.A. in history from Harvard in 1961, and a Ph.D. in history from the University of California, Berkeley in 1971.

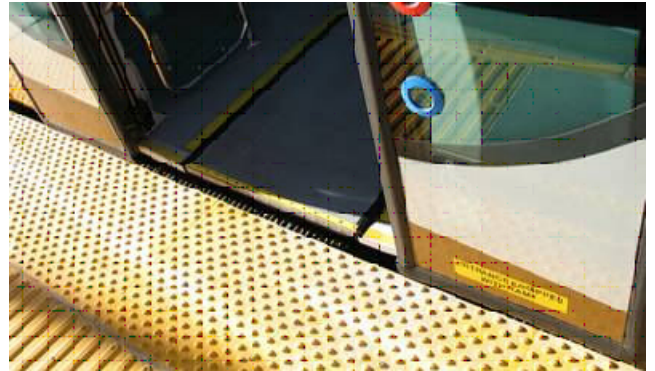
Dr. Morby taught history at the University of Texas, and then at California State University, Hayward starting in 1969. His areas of expertise included Egyptology and French Baroque music. He wrote *Dynasties of the World: A Chronological and Genealogical Handbook*, published by Oxford University Press. Dr. Morby protested against the Vietnam War, actively opposed the death penalty, wrote countless letters on behalf of political prisoners, and donated to animal rights organizations. He retired in 1998 and participated in the Faculty Early Retirement Program until 2003.

A world traveler and student of many languages, Dr. Morby continued taking language courses until the final weeks of his life. He was also an avid collector of classical music recordings.

Editorial Musings, Almost Opinions, Filling Space

- Filing space easily becomes filling space
- email sherman@csuhayward.us for a voter guide with humble opinions expressed as absolute certainties. Isn't poli sci a science?
- Do you know why electronically guided bus docking by the Las Vegas MAX is so important for CSUEB Hayward? Answer could be announced at lunch.

The...optical guidance system (OGS) feature...allows for automated precision docking at station platforms for level boarding at multiple entry points. ...When the vehicle approaches the "guided area," the system automatically detects and locks onto a trajectory of pavement markings. The operator can disengage the automated guidance by taking control of the steering wheel at any time. The operator remains in control of braking and acceleration throughout. /// The vehicle operates using an optical guidance system. Pavement markings of special paint will automatically steer the vehicle along the roadway thus improving comfort and docking precision at curbside stops. The vehicle uses hybrid diesel/electric propulsion. ...full level boarding is provided. This allows meeting ADA accessibility requirements....



- Same question, hybrid diesel/electric bus engines. Metro's bus fleet reached a high level of reliability this summer as the arrival of ...48 New Flyer diesel-electric hybrid buses...reduced mechanical breakdowns... Officials welcomed the environmental gains from the new buses, which will decrease Metro's diesel fuel consumption by 300,000 gallons a year and reduce carbon monoxide and hydrocarbon emissions by 90 percent, according to Metro. ...Cleaner, safer, more sustainable: the New Flyer hybrid diesel-electric bus, manufactured in Minnesota, USA ///
- Do you realize this is the price you pay for having me as your editor?

Postscripts editor Sherman Lewis

**Emeritus and Retired Faculty Association
CSU East Bay Hayward Affiliate
c/o President Beatrice Pressley
4817 Terra Granada Dr. 1A
Walnut Creek CA 94595**